

NUM	DEVELOPMENT NAME	TYPE	UNITS	YEAR APPROVED
1	Cypress Pointe	SF-D	73	2000
2	Barker's Ridge	SF-D	52	2000
3	Catawba Hills	SF-D	252	2000
4	Eagles Walk	SF-D	78	2000
5	St. Mary's	SF-D	11	2000
6	Reserve at Cypress Pointe	SF-D	29	2000
7	Catawba Hills Townhomes	SF-A	228	2000
8	Randolph Park	SF-D	18	2001
9	Robinwood Village Townhomes	SF-A	110	2001
10	Long Creek Meadows	SF-D	209	2001
11	Autumn Ridge	SF-D	80	2001
12	Evergreen Landing Apartments	MF	80	2001
13	Sundance Village	SF-D	81	2001
14	Fawnbrook	SF-D	109	2001
15	Madison Green Townhomes	SF-A	100	2001
16	Vinales	SF-D	62	2002
17	Icon on the Greenway Apartments	MF	180	2002
18	Canterbury Crossing Townhomes	SF-A	42	2002
19	Crowder's View	SF-D	288	2002
20	Reserve at Catawba Creek Apartments	MF	130	2002
21	Erskine Woods	SF-D	26	2003
22	Payton Downes	SF-D	31	2003
23	Brookhaven	SF-D	28	2003
24	Cramer Woods	SF-D	315	2003
25	Kinmere Farms	SF-D	116	2004
26	Village at Parkside	SF-D	253	2004
27	Spencer Mountain Village	SF-D	203	2004
28	Willow Creek	SF-D	238	2004
29	Francis Street Apartments	MF	16	2004
30	Carriage Company	MF	16	2004
31	Kinmere Commons Townhomes	SF-A	106	2004
32	Kinmere Village	SF-D	114	2004
33	Brentwood Chase Ph IV Apartments	MF	32	2005
34	Catherine Booth Apartments	MF	82	2005
35	Rosegate	SF-D	118	2005
36	Hudson Estates	SF-D	50	2005
37	Apple Creek	SF-D	33	2005
38	Village at the Mountain	SF-D	17	2005
39	Village at Fifth	SF-D	142	2005
40	Glyncastle at Kinmere	SF-D	37	2005
41	Village at the Mountain Townhomes	SF-A	18	2005
42	Bethesda Oaks	SF-D	185	2006
43	Maycroft	SF-D	59	2006
44	Robinson Oaks	SF-D	71	2006
45	Club Ridge	SF-D	18	2006
46	Villas at Robinson Oaks Townhomes	SF-A	46	2006
47	Approved as Springhaven	SF-M	103	2006
48	Laurel Commons Townhomes	SF-A	6	2007
49	Presley/Nolan Farms	SF-D	726	2007
50	Gateway Village	SF-D	4	2007
51	Gateway Village Apartments	MF	4	2007
52	Presley/Nolan Farms Town Homes	SF-A	133	2007
53	The Village of Ballantyne Apartments	MF	240	2008
54	Mills Creek III Apartments	MF	88	2008
55	Crowder's View Village Townhomes	SF-A	25	2008
56	Elizabeth Commons	SF-D	17	2009
57	Bordeaux Apartments	MF	32	2009
58	Center City Crossing Apartments	MF	100	2009
59	Highland Memorial	MF	75	2012
60	Armstrong Apartments	MF	18	2012
61	The Standard	MF	0	2013
62	Loray Mill Apartments	MF	270	2015
63	The Lofts at Union Trace Apartments	MF	60	2016
64	The Enclave at Cramer Woods	SF-D	4	2016
65	Glenwood Gardens Senior Apartments	MF	58	2016
66	Cramer Estates	SF-D	59	2017
67	Winterlake	SF-D	51	2019
68	Cramer Estates	SF-D	58	2019
69	Reserve at Rankin Lake	MF	126	2019
70	Northglenn Townhomes	SF-A	220	2019
71	Tupelo (Formerly Glenwood Townhome Community)	SF-A	165	2019
72	Seasons of Gastonia Apartments	MF	156	2019
73	Rhyme Terraces Townhomes	SF-A	80	2019
74	Ruby Dixon Crossing	SF-A	80	2019
75	Villas at Union Crossing Senior Apartments	MF	84	2019
76	Parkside at Hudson Apartments	MF	80	2019
77	Spring Haven	SF-D	103	2019
78	Mills Creek IV Apartments	MF	84	2019
79	Camber Woods	SF-D	161	2020
80	Catawba Creek	MF	66	2020
81	New Hope Road	MF	230	2020
82	Bellewood Townhomes	SF-A	96	2020
83	Bellewood	SF-D	13	2020
84	Wilson Property	SF-D	296	2020
85	Union Square	SF-D	56	2020
86	Wilson Property	MF-A	260	2020
87	Wilson Property	SF-A	60	2020
88	Hudson Townhomes	SF-A	153	2020
89	Ethan's Pointe Apartments	MF-A	322	2020
90	South New Hope Road Apartments	MF-A	145	2020
91	Trenton Mill Lofts	MF	85	2021
92	Ovata at Blackwood Creek Apartments	MF-A	78	2021
93	Manor at Union Crossing Apartments	MF-A	78	2021
94	Kendrick Rd Townhomes	SF-A	86	2021
95	Summit Ridge Townhomes	SF-A	135	2021
96	Copper Mill Townhomes	SF-A	45	2021
97	Blackwood Creek	SF-D	42	2021
98	Grover St Duplexes	SF-A	164	2021
99	Neal Hawkins Subdivision	SF-A	60	2021
100	Summerset Woods Apartments	SF-A	82	2021
101	Fairhaven Place Apartments	SF-A	200	2021
102	Westfall	SF-M	439	2021
103	The Courtyards at Cramerton	SF-D	44	2021
104	Howe's Landing	SF-M	275	2022
105	Crowder's Bluff	MF-A	125	2022

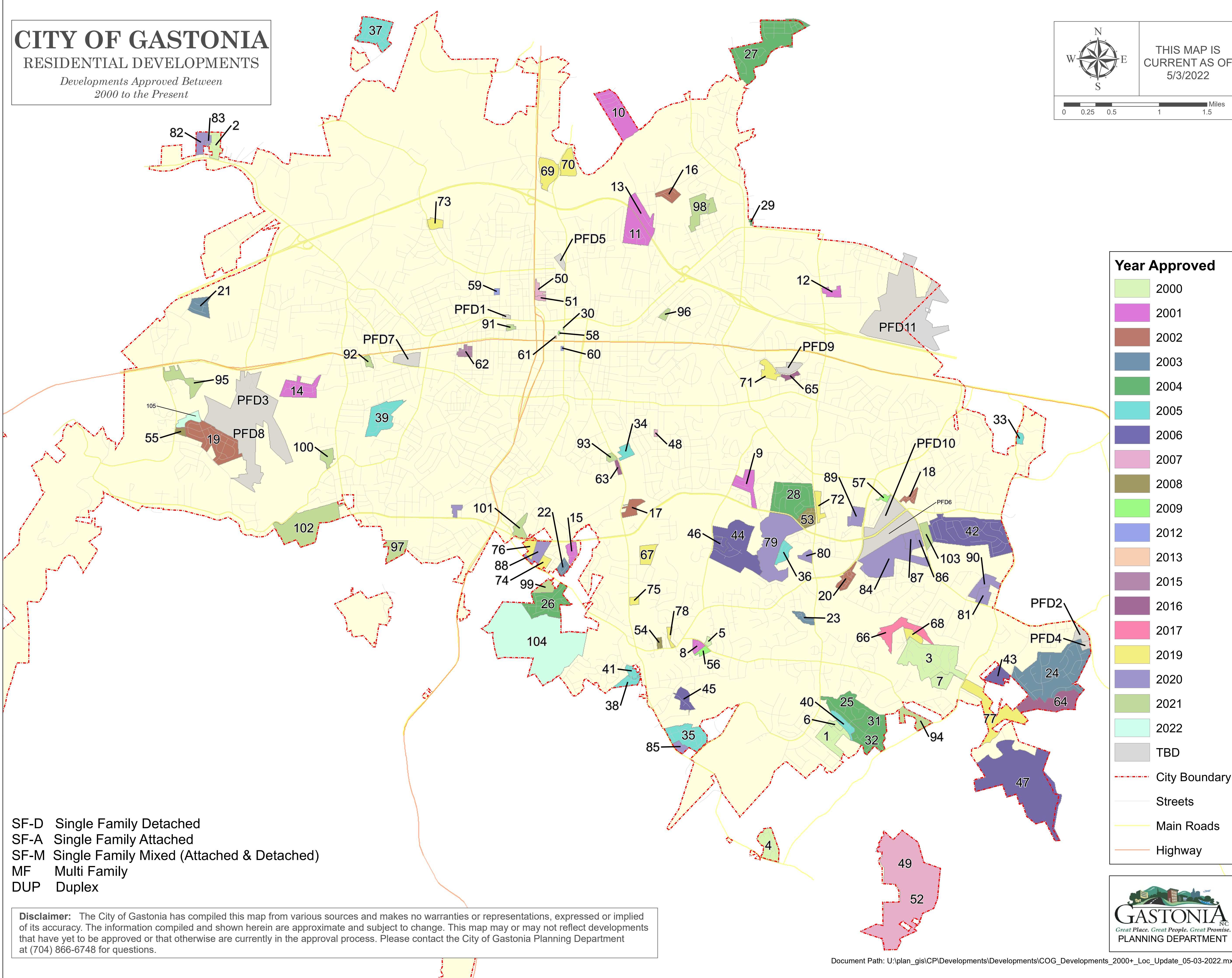
# CITY OF GASTONIA

## RESIDENTIAL DEVELOPMENTS

*Developments Approved Between 2000 to the Present*

THIS MAP IS CURRENT AS OF 5/3/2022

0 0.25 0.5 1 1.5 Miles



### Year Approved

- 2000
- 2001
- 2002
- 2003
- 2004
- 2005
- 2006
- 2007
- 2008
- 2009
- 2012
- 2013
- 2015
- 2016
- 2017
- 2019
- 2020
- 2021
- 2022
- TBD

- City Boundary
- Streets
- Main Roads
- Highway

SF-D Single Family Detached  
 SF-A Single Family Attached  
 SF-M Single Family Mixed (Attached & Detached)  
 MF Multi Family  
 DUP Duplex

**Disclaimer:** The City of Gastonia has compiled this map from various sources and makes no warranties or representations, expressed or implied of its accuracy. The information compiled and shown herein are approximate and subject to change. This map may or may not reflect developments that have yet to be approved or that otherwise are currently in the approval process. Please contact the City of Gastonia Planning Department at (704) 866-6748 for questions.

NUM	PROPOSED FUTURE DEVELOPMENTS	TYPE	UNITS	YEAR APPROVED
PFD1	PROPOSED Airline Ave. Apartments	SF-A	120	TBD
PFD2	PROPOSED New Hope Rd. Town Homes	SF-A	102	TBD
PFD3	PROPOSED Crowder's Creek Apartments	MF-A	600	TBD
PFD4	PROPOSED Cramer Woods	SF-A	102	TBD
PFD5	PROPOSED MLK Apartments	SF-A	132	TBD
PFD6	PROPOSED Hand Property Development	SF-M	336	TBD
PFD7	PROPOSED Amavi Parkdale Mills Apartments	SF-A	89	TBD
PFD8	PROPOSED Crowder's Creek Development	SF-M	500	TBD
PFD9	PROPOSED Glenwood Dr. Apartments	SF-A	350	TBD
PFD10	PROPOSED Hand Property Apartments	SF-A	336	TBD
PFD11	Lineberger Property (Pending)	MF-A	TBD	TBD

